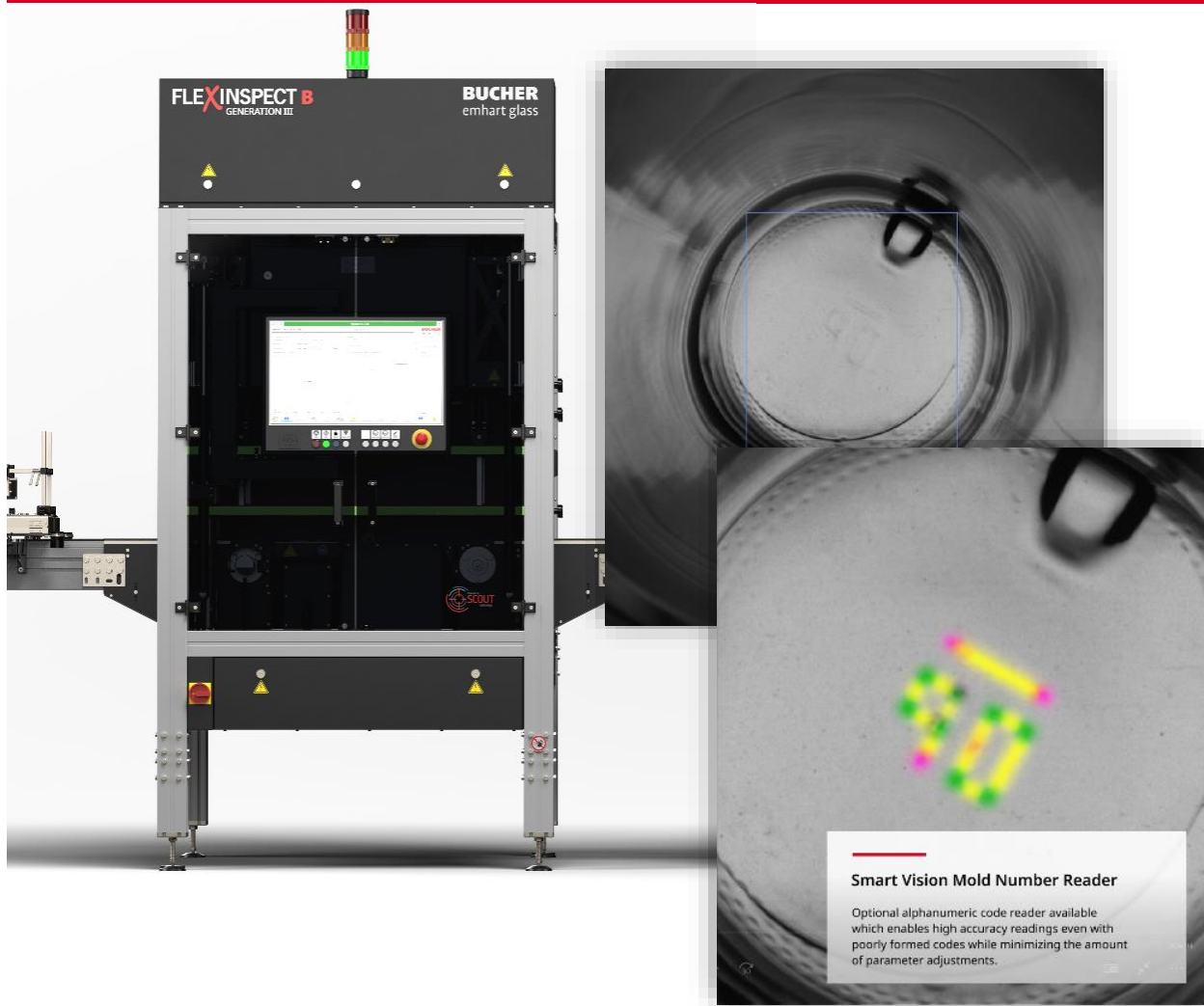


# Technical News Bulletin

March, 2022



Smart vision seven segment code reader with SCOUT Ai reads codes ...

- ... even when poorly formed
- ... with minimal parameter adjustments
- ... no matter the location on the base



## Introduction

The “SCOUT Ai” smart vision mold reader software option is the industry’s first deep learning tool for seven segment numeric codes. The system has been trained with a large collection of images to accurately and reliably read the mold numbers.

## System Description

The smart vision mold reader is a deep learning software option that uses the 4MP camera images from the base inspection.

The smart vision mold reader is tolerant to poorly formed codes

Conventional code readers have difficulty accurately reading the code when portions of the segments are not properly formed. These conventional systems are difficult to setup, need frequent adjustments to maintain acceptable read rates and many times require special optics to enhance the contrast of the code segments.

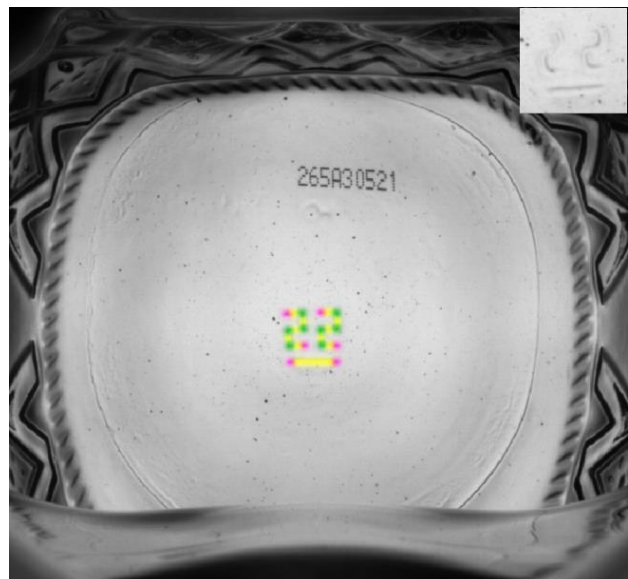
SCOUT Ai is the solution

Setup is simple with the “SCOUT Ai” smart vision mold reader option. The system is capable of accurately reading the code even when portions of the segments are not properly formed.

## Specification

Base Inspection: Round, Non-round bottles

Bottle range: same as base inspection specification



## Availability / Application

Smart vision mold reader is available for all Symplex eco, chili G1, G2, G3, BS & FleXinspect B Gen III

## Installation Requirements

A PC hardware upgrade may be required when installing this feature on older machines

### Features

---

Reads the code from the 4MP base image

---

Visualization of the mold code

---

Minimal adjustments - Only two parameters  
(region of interest, confidence)

---

### Benefits

---

Additional optics not required

---

Reassures segments were properly identified

---

Reduces setup time

Reduces human errors

Faster job change time

---

